

# Carriage Creek

Composite Overlay Doors  
3 Layer, Insulated Sandwich



↑ STYLE 5 | WHITE | STOCKTON WINDOW



↑ STYLE 5 | GRAY | STOCKTON WINDOW

## Composite Overlay Doors

All the elegance of a Carriage House door, with the strength and protection of a steel door.

- Overlay 3 layer insulated sandwich panel
- 1.0 mil paint with 5 color options
- 8 style designs
- 6 window options
- R-value 10.25
- Steel interior skin



WHITE



ALMOND



DESERT TAN



SANDSTONE



GRAY

\*Colors may vary from actual product. All overlay boards are finished in white primer only, not a finished top coat.



STYLE 6 | ALMOND | STOCKTON WINDOW ↑

### CARE INSTRUCTIONS

Carriage Creek Garage Doors are hand-crafted with low maintenance in mind with their steel and composite construction. In order to keep them in excellent condition, we offer these care instructions.

### CLEANING

Clean regularly with warm, soapy water only. Do not use an abrasive cleanser.

### PAINTING

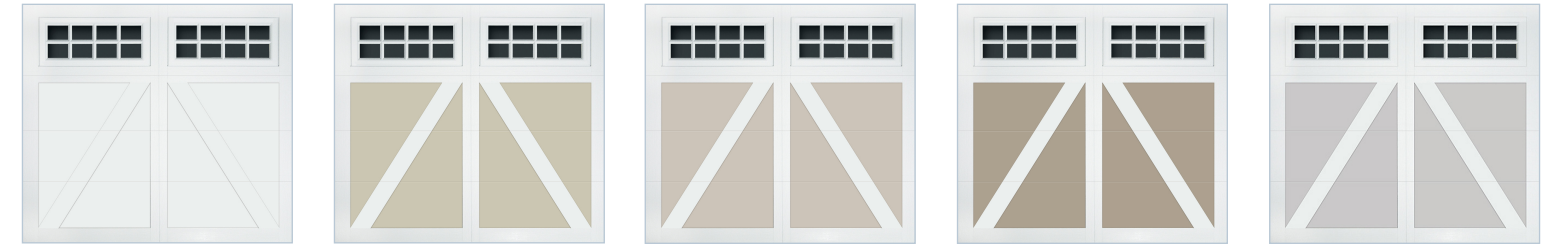
Use high quality, 100% acrylic latex paint. Use paint with an LRV (Light Reflective Value) greater than 15%. This will exclude some darker colors from being used. The Carriage Creek Warranty will be void if paint with an LRV of 15% or less is used.

### MAINTENANCE

Although you should conduct monthly safety checks and provide regular limited maintenance, an annual visit from a trained door technician can keep your door operating safely and smoothly for a long time.



STYLE 2 | WHITE | STOCKTON WINDOW ↑



WHITE

ALMOND

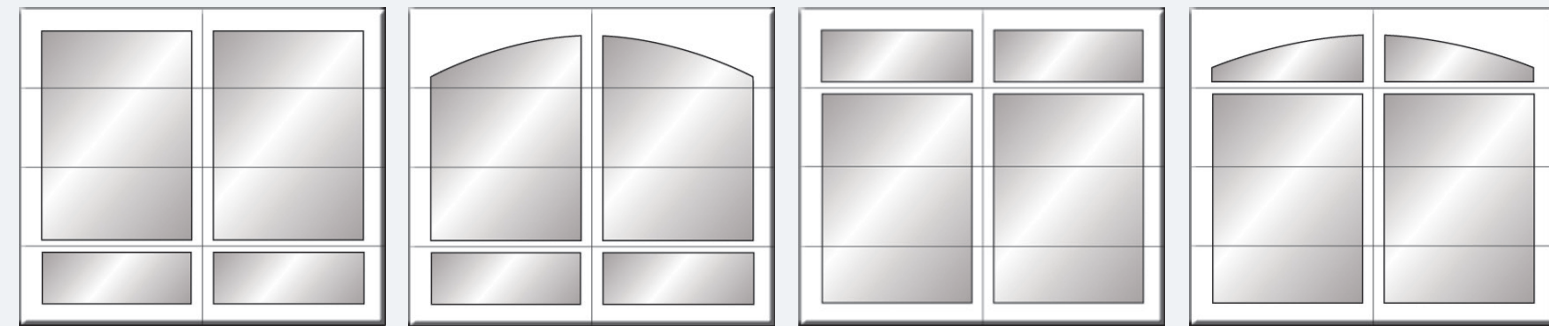
DESERT TAN

SANDSTONE

GRAY

*\*Colors may vary from actual product. All overlay boards are finished in white primer only, not a finished top coat.*

### STYLE DESIGN OPTIONS



STYLE 1

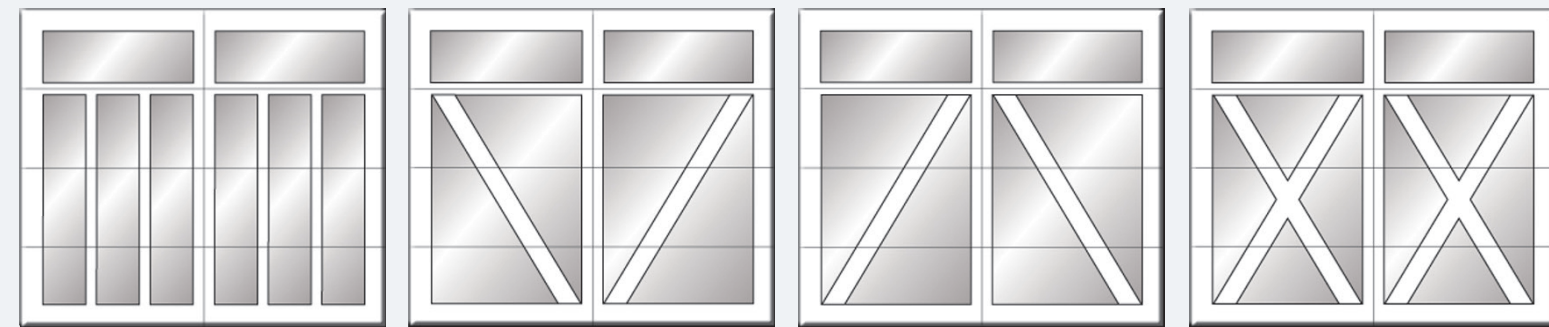
STYLE 1 ARCH\*

STYLE 2

STYLE 2 ARCH\*

*\*No windows are available with this model.*

*\*No windows are available with this model.*



STYLE 3

STYLE 4

STYLE 5

STYLE 6

### WINDOW OPTIONS



PLAIN

STOCKTON

STOCKBRIDGE

*\*Windows are only available with these panel style designs: 1 (no arch), 2 (no arch), 3, 4, 5, and 6.*

### WINDOW GLASS OPTIONS

See website for glass options

## FEATURES

**3**

### OVERLAY 3 LAYER INSULATED SANDWICH PANEL

Nominal 24 gauge steel exterior panel and a 26 gauge pebble grain embossed steel interior panel with polystyrene insulation.



### COMPOSITE OVERLAY FINISH

Attached chemically to the surface creating a lasting superior bond.



### 20 GAUGE HOT DIPPED STEEL HINGE PLATES

Galvanized steel hinge plates run the full height of each section at all hinge locations to facilitate the attachment of hinges, handles, struts, and step plates.



### TONGUE AND GROOVE MEETING RAILS

For superior strength and better sealing against wind, rain, and snow.



### RIGID ALUMINUM RETAINER WITH WEATHERSTRIP

Provides added strength while securing replaceable U-type bottom astragal weatherstrip to help keep the elements out.



**10.25**

### R-VALUE 10.25

Sandwich type construction with polystyrene insulation pressure bonded between two sheets of hot dipped galvanized steel enhances your home's energy savings, makes your door operation quieter, and reduces exterior noise in your garage.



### CFC FREE EXPANDED POLYSTYRENE

Environmentally friendly insulation that will not degrade with vibration or time.

## SIZE OPTIONS

### WIDTHS:

8', 9',  
10'



12', 14'

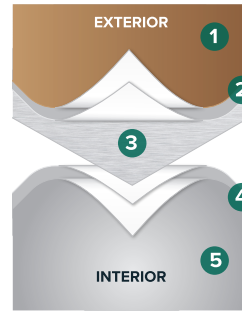


15', 16',  
18'



HEIGHTS: 6'6", 6'9", 7'0", 7'6", 7'9", 8'0"

## PAINT LAYERS

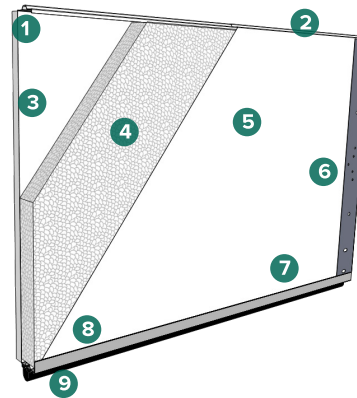


## 1.0 MIL PAINT SYSTEM

Includes .25 mil rust inhibiting primer and .75 mil exterior top coat that resists fading and chalking, while providing consistent color from panel to panel and more durability.

- 1 Paint - .75 MIL
- 2 Primer - .25 MIL
- 3 Steel
- 4 Primer - .2 MIL
- 5 Paint - .3 MIL

## CONSTRUCTION



- 1 Tongue and groove meeting rails
- 2 2 3/4" thick overlay section
- 3 Composite overlay finish
- 4 CFC free expanded polystyrene insulation
- 5 Pebble grain embossed interior backskin
- 6 20 gauge hot dipped galvanized steel end caps
- 7 Extruded aluminum weatherstrip retainer
- 8 20 gauge full vertical steel hinge plate for hardware attachment
- 9 Replaceable U-type vinyl bottom weatherstrip

## HARDWARE OPTIONS



CAST  
IRON



STAMPED  
STEEL